

# **SOUTHLAND**<sup>®</sup>

ILLUSTRATED PARTS BOOK

150cc Wheeled Field Trimmer

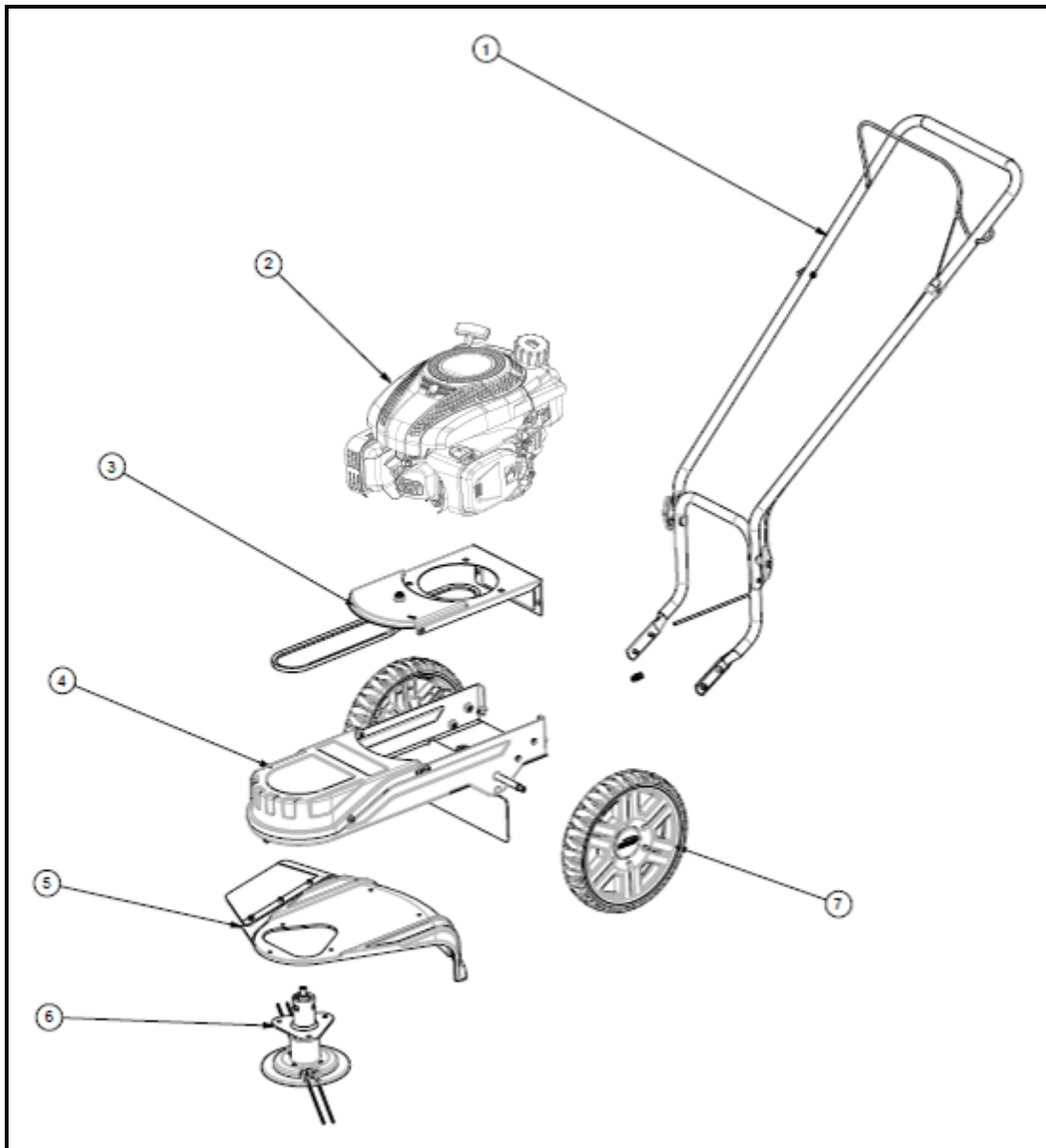
SWFT15022



# Table of Contents

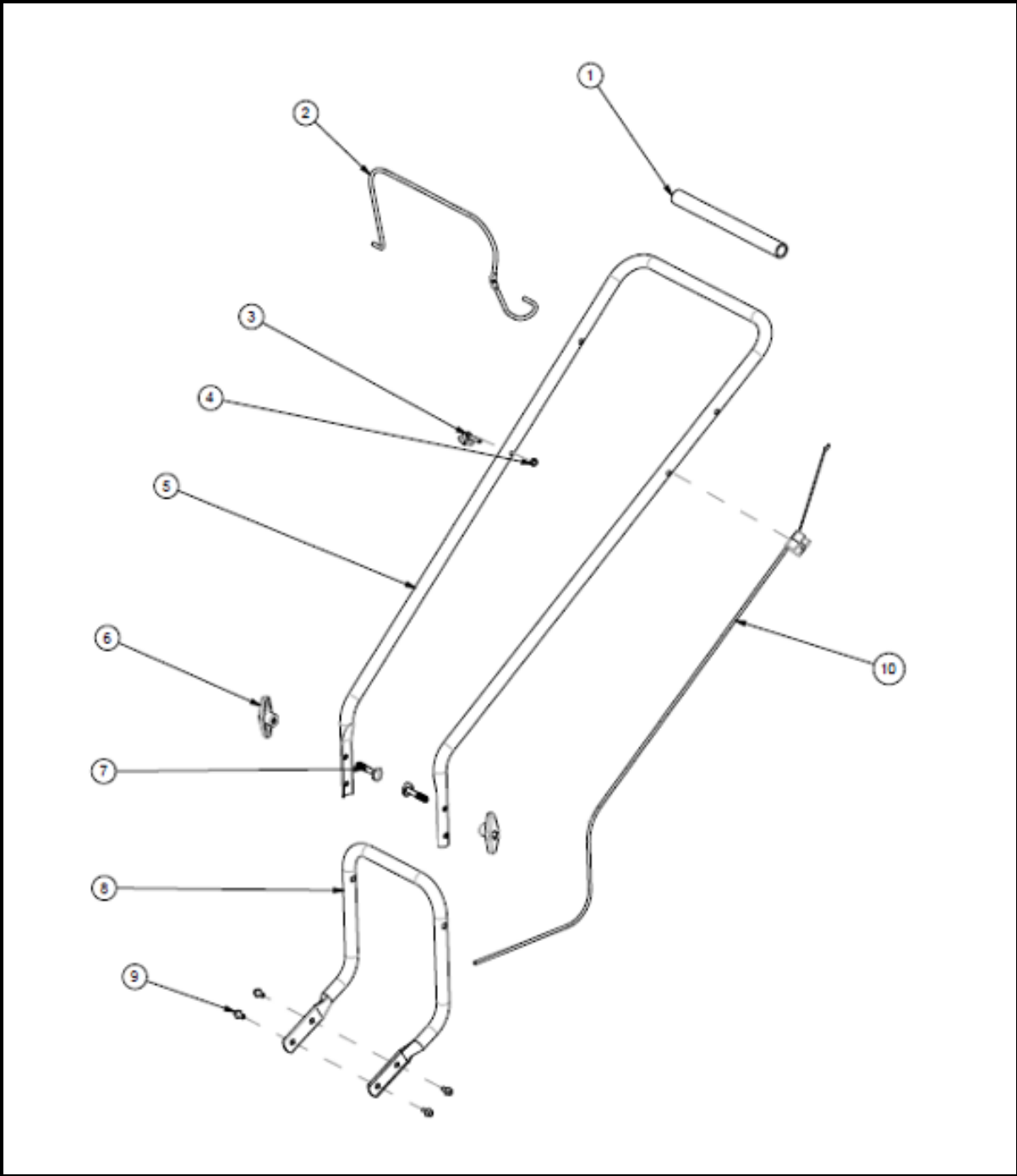
Top Level Assembly.....	2
Handle Assembly.....	3-4
Engine Assembly.....	5
Drive System.....	6
Frame Assembly.....	7
Shroud Assembly.....	8
Cutting Head Assembly.....	9-10
Wheel Assembly.....	11
<u>RV150 Engine EPA3 (A202745)</u>	
Crankcase and Cover.....	12
Cover, Cylinder Head.....	13
Engine Shroud.....	13
Carburetor.....	14
Control.....	14
Fuel Tank.....	15
Flywheel / Ignition.....	16
Air Cleaner.....	17
Muffler.....	17
Engine Decals.....	18
Unit Decals.....	19

# Top Level Assembly



REF. NO.	DESCRIPTION	PART NO.	QTY
1	Handle Assembly	See Pages 3-4	1
2	Engine Assembly	See Page 5	1
3	Drive System	See Page 6	1
4	Frame Assembly	See Page 7	1
5	Shroud Assembly	See Page 8	1
6	Cutting Head Assembly	See Pages 9-10	1
7	Wheel Assembly	See Page 11	2
-	Engine Breakdown	See Pages 12-17	1
-	Decals	See Pages 18-19	1

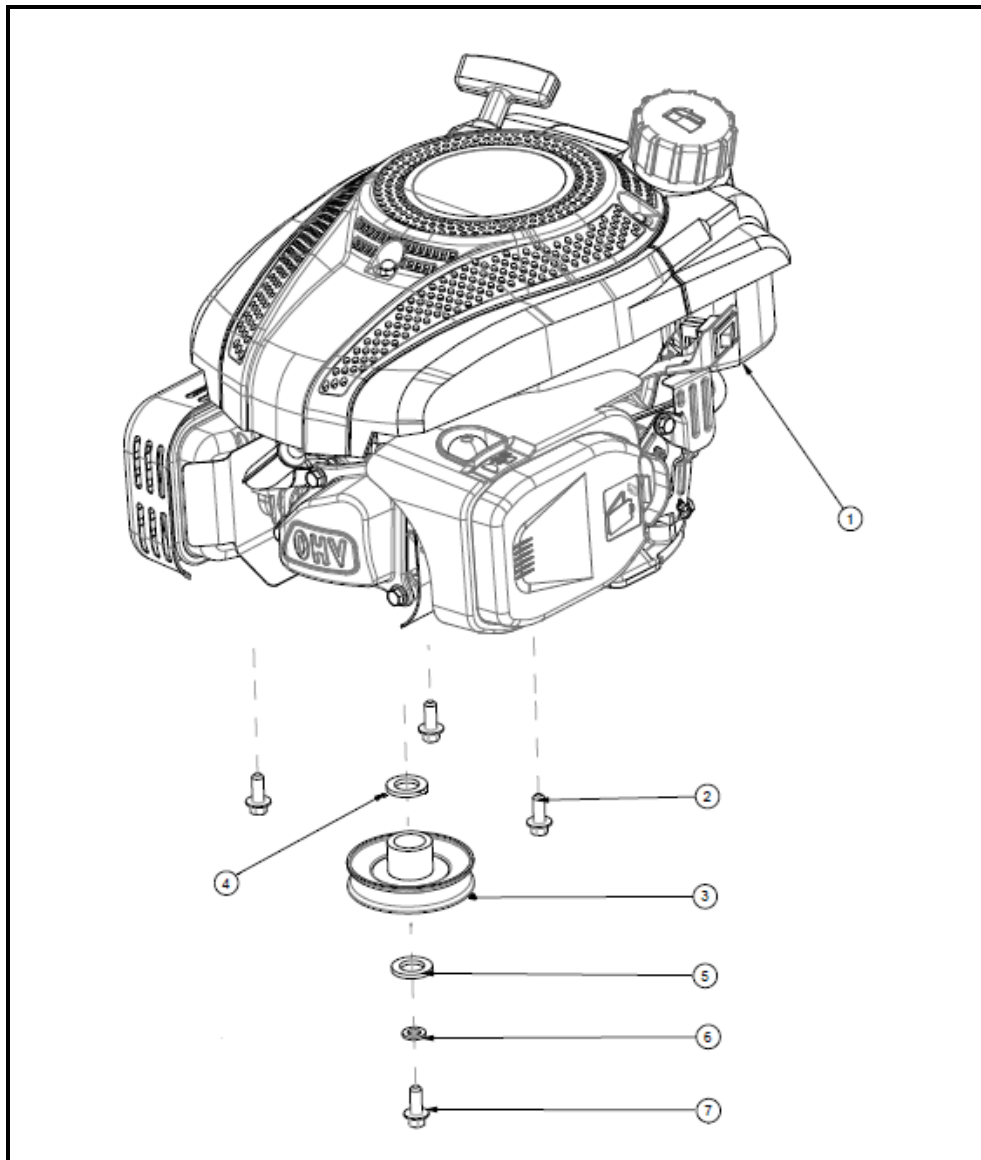
# Handle Assembly



# Handle Assembly

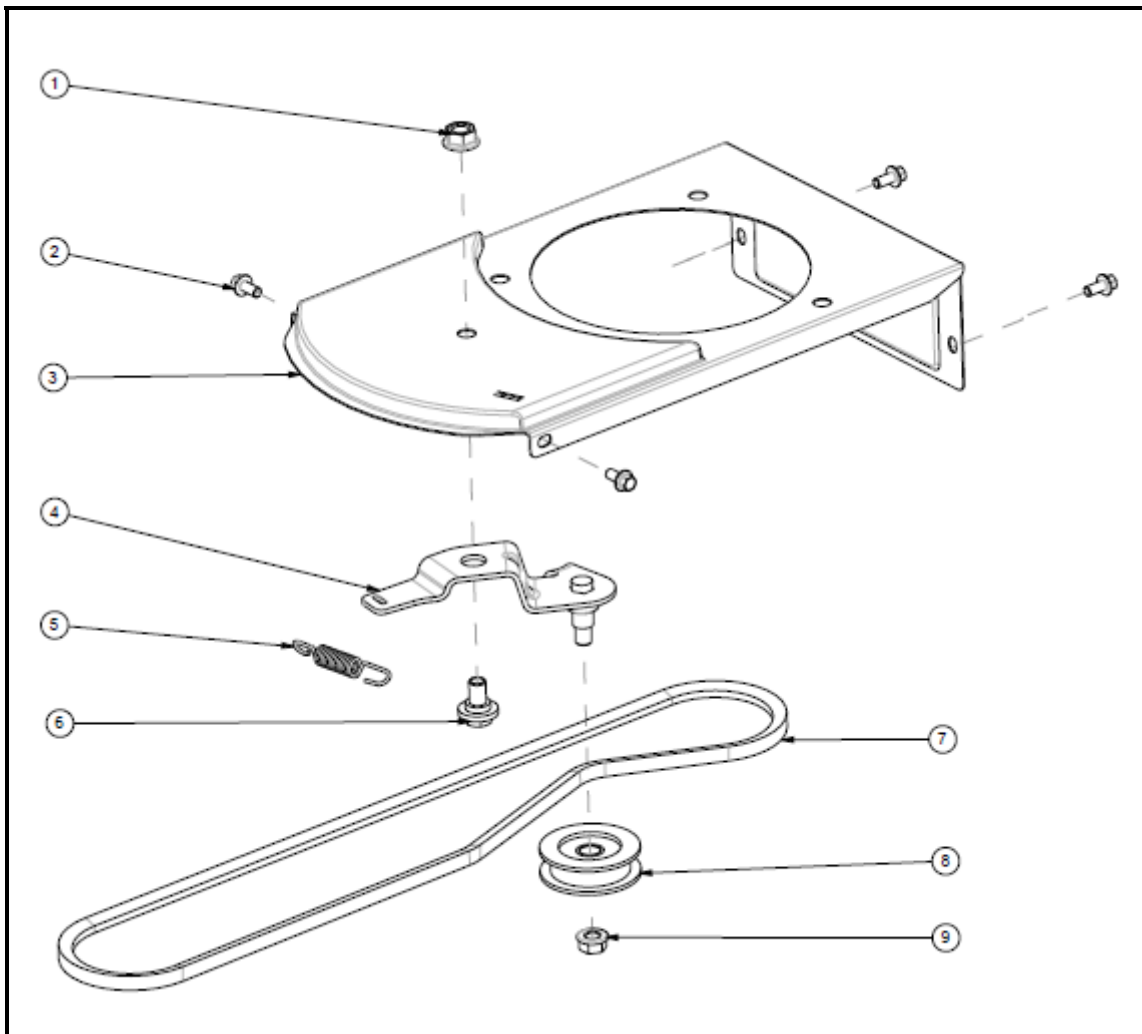
REF. NO.	DESCRIPTION	PART NO.	QTY
1	Foam, Handle	A201940	1
2	Bail, Engagement	A201385	1
3	Guide, Rope	A100521	1
4	Locknut, 1/4-20, Black Oxide, Grade 8	<i>Reference Only</i>	1
5	Handle, Upper	A201028	1
6	Knob, Handle Bar	A200190	2
7	Bolt, Handle Bar	A202629	2
8	Handle, Lower	A201027	1
9	Screw, 5/16-18 x 0.75, Hex Serrated Flange, Thread Forming, Type AB Point, Black Oxide, Grade 8.8	A202424	4
10	Cable, Engagement	A201945	1

# Engine Assembly (Engine Breakdown Pg 12-21)



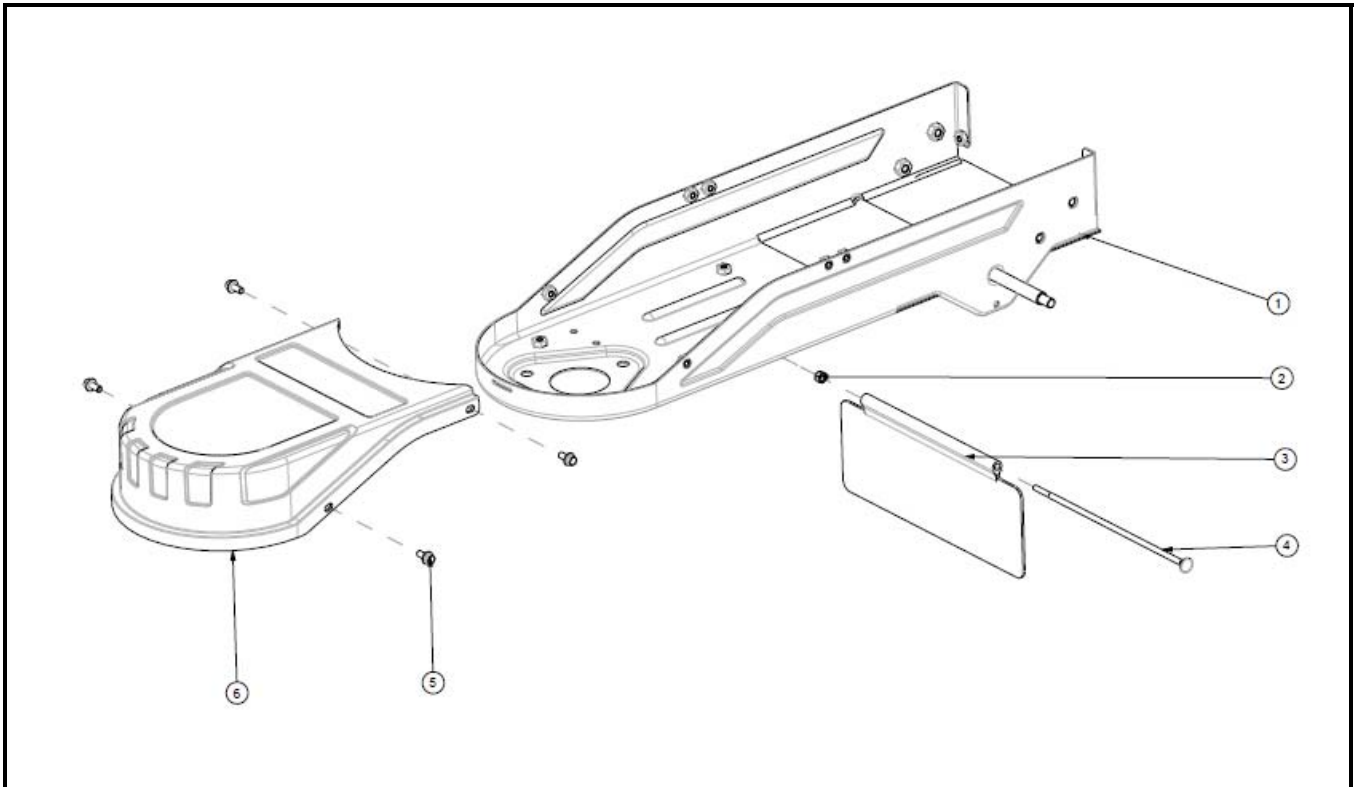
REF. NO.	DESCRIPTION	PART NO.	QTY
1	Engine, RV150 EPA3	A202745	1
2	Screw, 3/8-16 x 1.0", HFH, Tri-lobular Thread Forming, Black Oxide, Grade 8.8	A202426	3
3	Pulley, Engine	A203415	1
4	Flat Washer, Heat Treated	A203416	1
5	Flat Washer, 10 x 32 x 3.0, Zinc	Reference Only	1
6	Lock Washer, M10, Zinc	Reference Only	1
7	Screw, 3/8-24 x 1.0", HHCS, Black Oxide, Grade 10.9	A202427	1

# Drive System



REF. NO.	DESCRIPTION	PART NO.	QTY
1	Lock Nut, M10 x 1.5, Hex Flange, Zinc, Grade 8	<i>Reference Only</i>	2
2	Screw, M6 x 1.0 x 16, Cross Recessed, Round Neck Machine, Zinc, Grade 8.8	<i>Reference Only</i>	4
3	Plate, Inspection, Southland Red	A202490	1
4	Bracket, Idler	A201948	1
5	Spring, Idler Tension	A202622	1
6	Screw, M10 x 1.25 x 15, HFH Shoulder, Zinc, Grade 8.8	A201924	1
7	Belt, Drive, 9.5 x 1160	A201921	1
8	Assembly, Idler Pulley	A100565	1

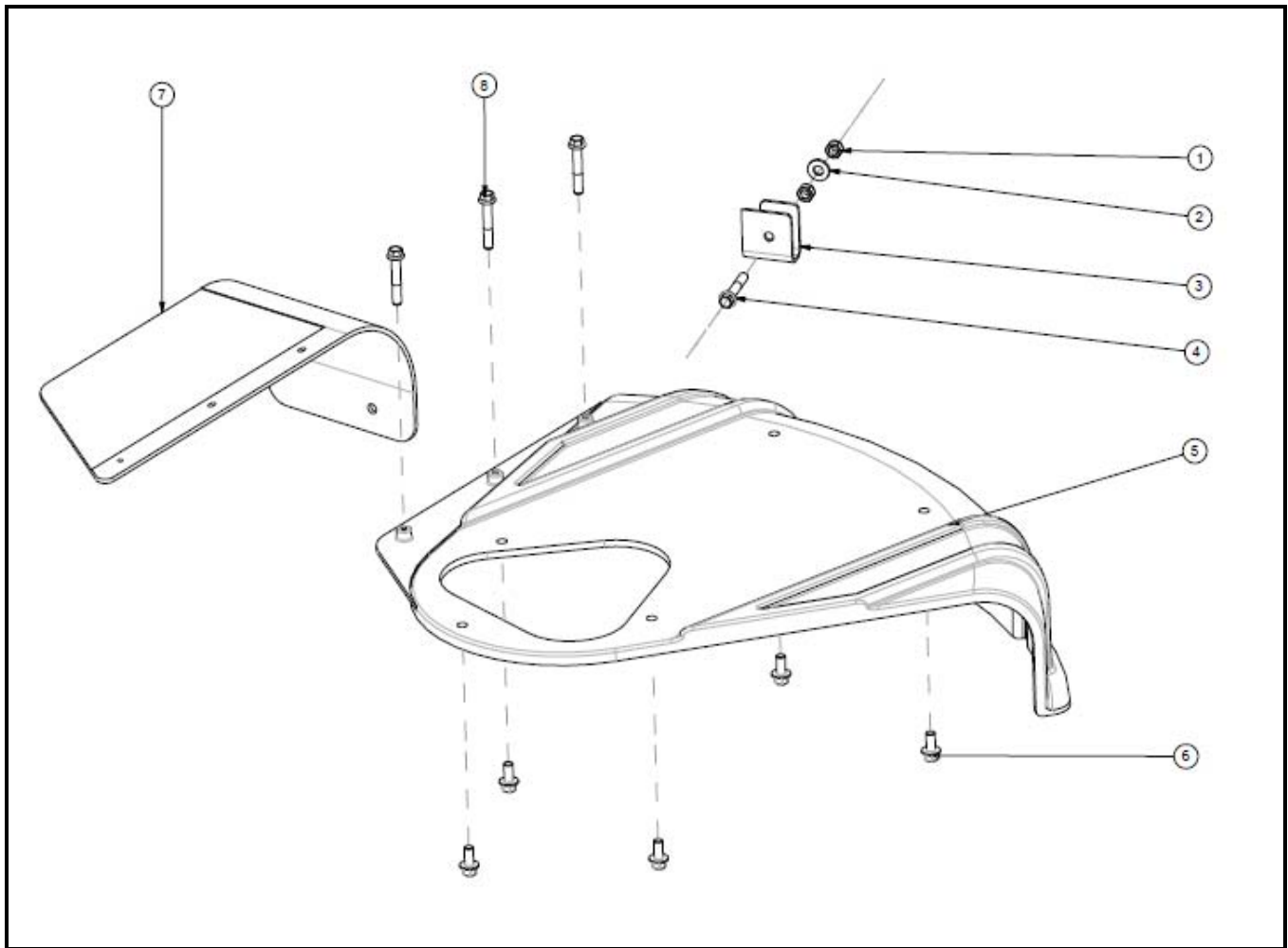
# Frame Assembly



REF. NO.	DESCRIPTION	PART NO.	QTY
1	Weldment, Frame, Southland Red	A202489	1
2	Lock Nut, M6 x 1.0, Zinc, Grade 8	<i>Reference Only</i>	1
3	Flap, Guard	A201025	1
4	Post, Flap Mount	A201024	1
5	Screw, M6 x 1.0 x 16, Cross Recessed Round Neck Machine, Zinc, Grade 8.8	<i>Reference Only</i>	4
6	Cover, Base	A201029	1

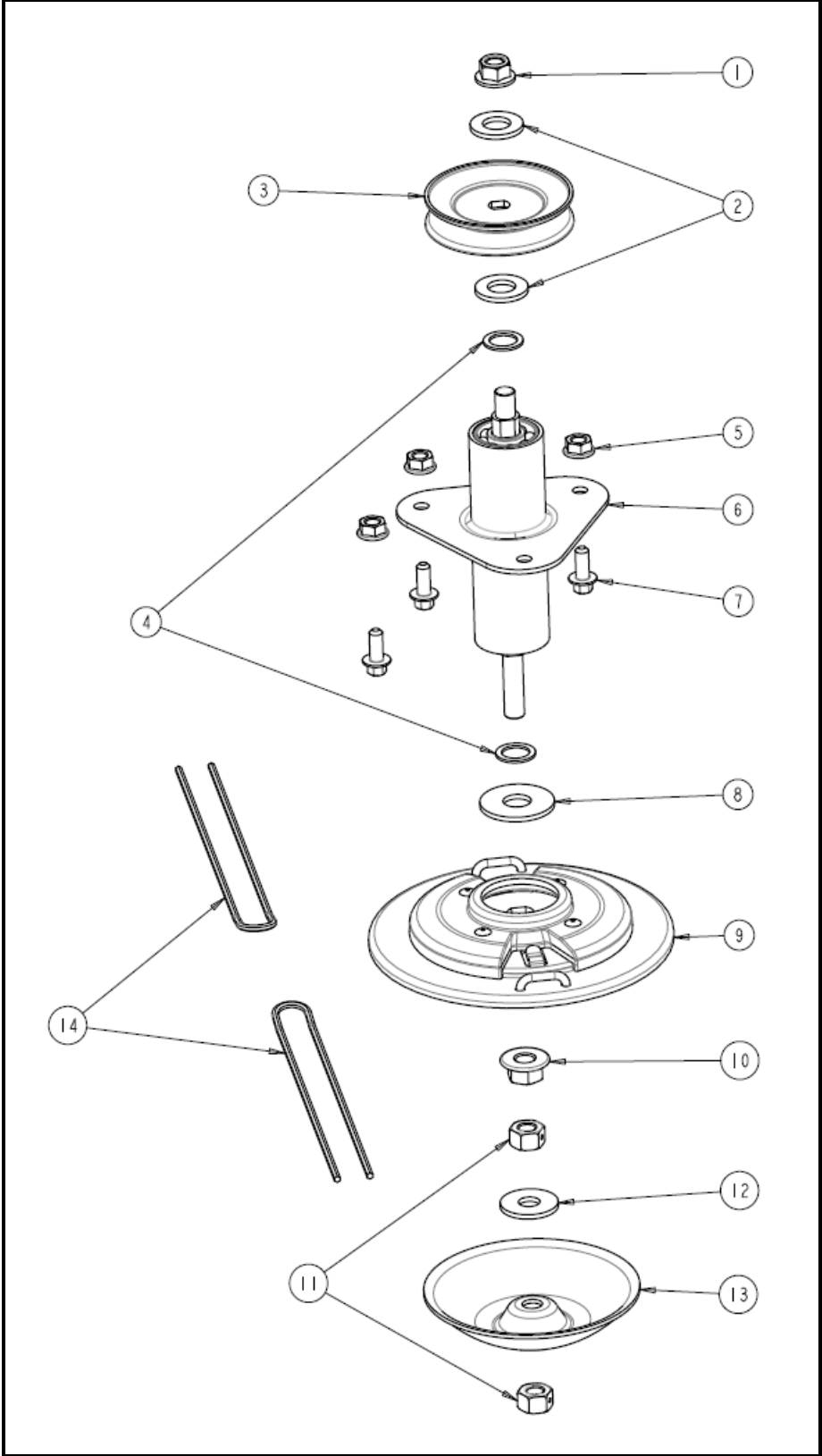


# Shroud Assembly



REF. NO.	DESCRIPTION	PART NO.	QTY
1	Lock Nut, M6 x 1.0, Zinc, Grade 8	<i>Reference Only</i>	2
2	Flat Washer, M6 x 3.0, Zinc	<i>Reference Only</i>	1
3	Blade, Line Cutting	A201910	1
4	Screw, M6 x 1.0 x 35, HFH, Zinc, Grade 8.8	<i>Reference Only</i>	1
5	Shroud, Safety	A201026	1
6	Screw, M6 x 1.0 x 16, Cross Recessed Round Neck Machine, Zinc, Grade 8.8	<i>Reference Only</i>	5
7	Guard, Discharge	A202422	1
8	Screw, No. 10-16 x 0.5", Cross Recessed Hex Flange, Thread Forming, Black Oxide, Grade 8.8	<i>Reference Only</i>	3

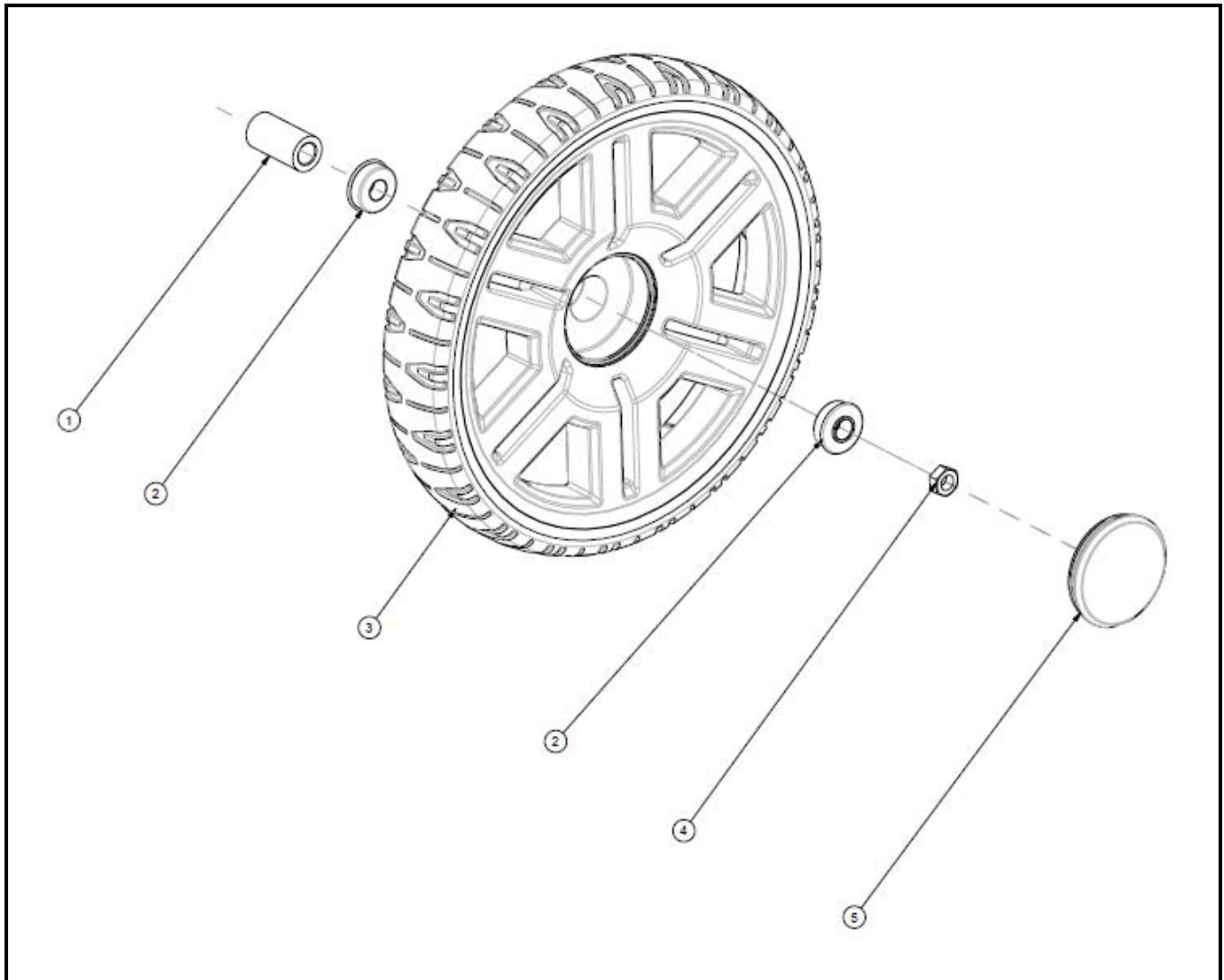
# Cutting Head Assembly



# Cutting Head Assembly

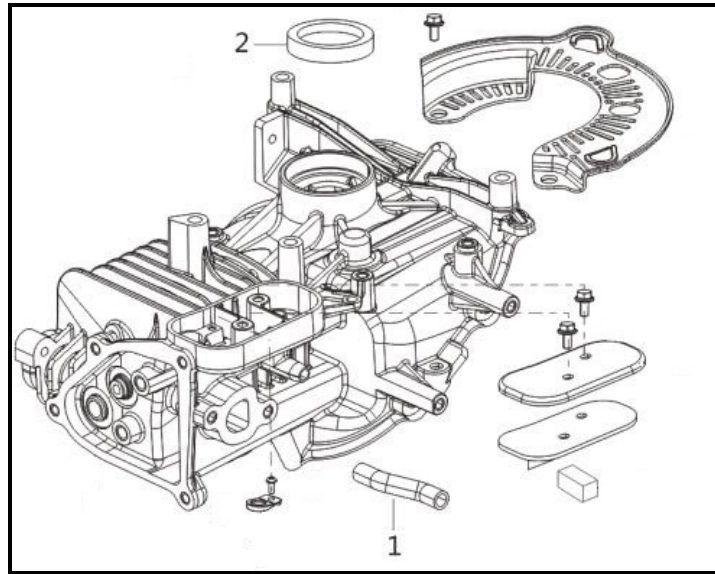
REF. NO.	DESCRIPTION	PART NO.	QTY
1	Lock Nut, M12 x 1.25, Hex Flange, Zinc, Grade 8	<i>Reference Only</i>	1
2	Flat Washer, 17 x 32 x 3.0, Zinc	<i>Reference Only</i>	2
3	Pulley, Cutting Head	A203089	1
4	Flat Washer, 17 x 24 x 1.5, Zinc	<i>Reference Only</i>	2
5	Lock Nut, M10 x 1.5, Hex Flange, Zinc, Grade 8	<i>Reference Only</i>	3
6	Assembly, Cutter Head Tube	A200207	1
7	Screw, M10 x 1.5 x 20, HFH, Zinc, Grade 8.8	<i>Reference Only</i>	3
8	Flat Washer, 17 x 45 x 3.0, Zinc	<i>Reference Only</i>	1
9	Assembly, Cutter Head, Southland Red	A202488	1
10	Lock Nut, M12 x 1.25, Hex Flange, Zinc, Grade 8	<i>Reference Only</i>	1
11	Lock Nut, M12 x 1.25, Hex, Zinc, Grade 8	<i>Reference Only</i>	2
12	Flat Washer, 13 x 35 x 3.0, Zinc	<i>Reference Only</i>	1
13	Bowl, Cutter Head	A200206	1
14	Line, Trimmer, 0.155"	A203432	2

# Wheel Assembly



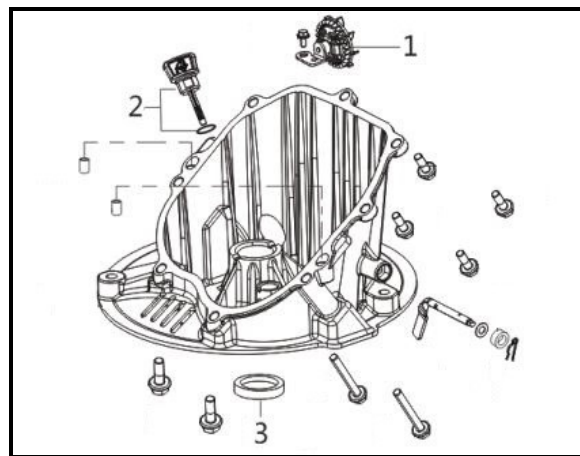
REF. NO.	DESCRIPTION	PART NO.	QTY
1	Spacer, Wheel	A201023	2
2	Bearing, Wheel	A100560	4
3	Assembly, 12" Wheel, 6 Spoke	A201387	2
4	Lock Nut, M10 x 1.5, Hex Flange, Zinc, Grade 8	<i>Reference Only</i>	2
5	Hubcap, 12" Wheel	A202487	2

# Crankcase, RV150



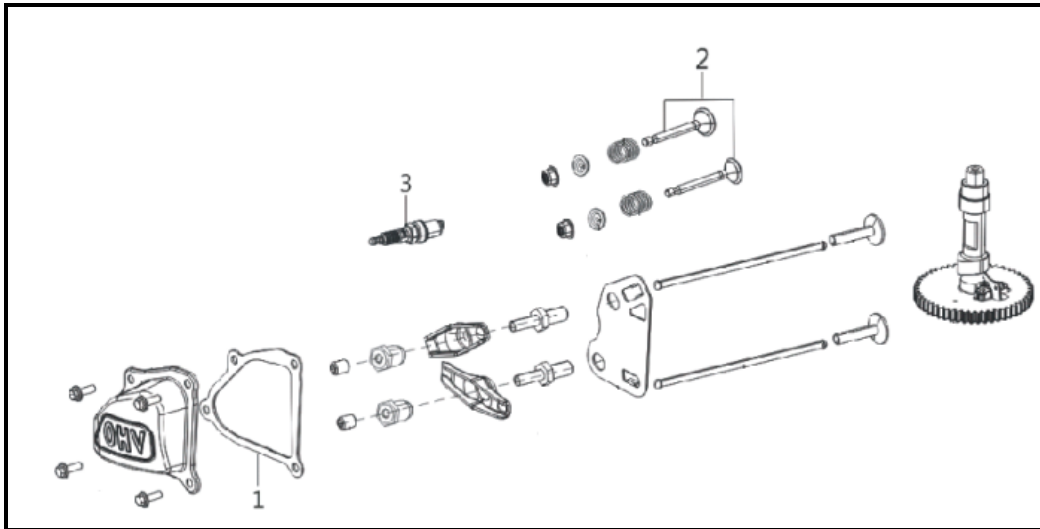
REF. NO.	DESCRIPTION	PART NO.	QTY
1	Tube, Breather	A203217	1
2	Seal, Oil, Upper	A203226	1

# Crankcase Cover, RV150



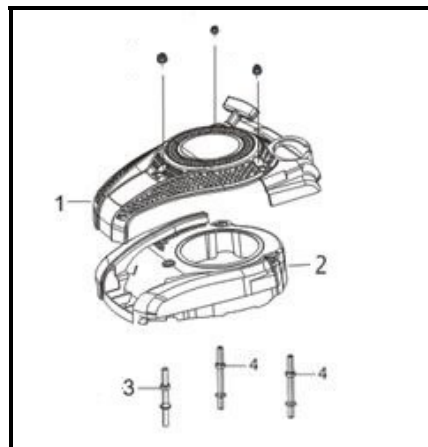
REF. NO.	DESCRIPTION	PART NO.	QTY
1	Assembly, Governor Gear	A203202	1
2	Assembly, Oil Dipstick	A203210	1
3	Seal, Oil, Lower	A201599	1

## Cover, Cylinder Head, RV150



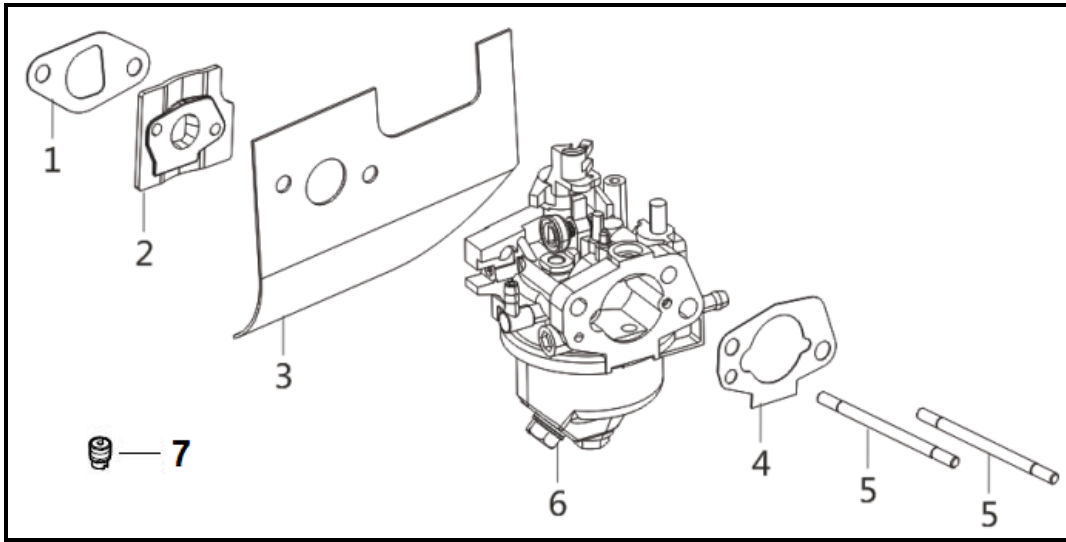
REF. NO.	DESCRIPTION	PART NO.	QTY
1	Gasket, Valve Cover	A203209	1
2	Valve, Intake and Exhaust	A203211	1
3	Plug, Spark (Torch K7RTC)	A203224	1

## Engine Shroud and Recoil, RV150



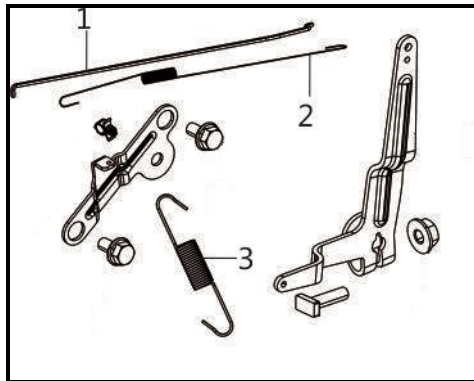
REF. NO.	DESCRIPTION	PART NO.	QTY
1	Assembly, Recoil with Top Shroud	A203213	1
2	Shroud, Lower	A203214	1
3	Stud, Shroud	A203229	1
4	Stud, Shroud	A203230	2

# Carburetor, RV150



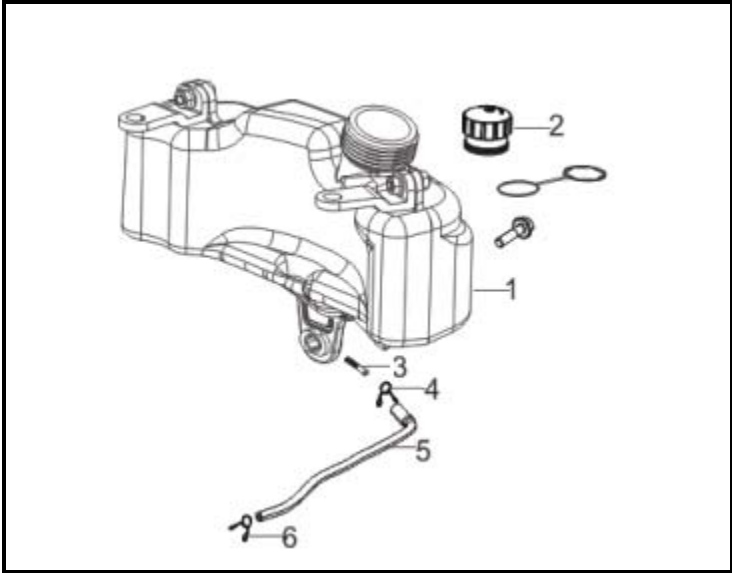
REF. NO.	DESCRIPTION	PART NO.	QTY
1-5	Kit, Carburetor	A203204	1
6	Assembly, Carburetor	A203280	1
7A	Kit, High Altitude Carburetor Jet (3000-6000 ft)	A203878	1
7B	Kit, High Altitude Carburetor Jet (6000-8000 ft)	A203879	1

# Assembly, Throttle and Governor Control, RV150



REF. NO.	DESCRIPTION	PART NO.	QTY
1	Rod, Governor	A203206	1
2	Spring, Throttle Return	A203207	1
3	Spring, Governor	A203205	1

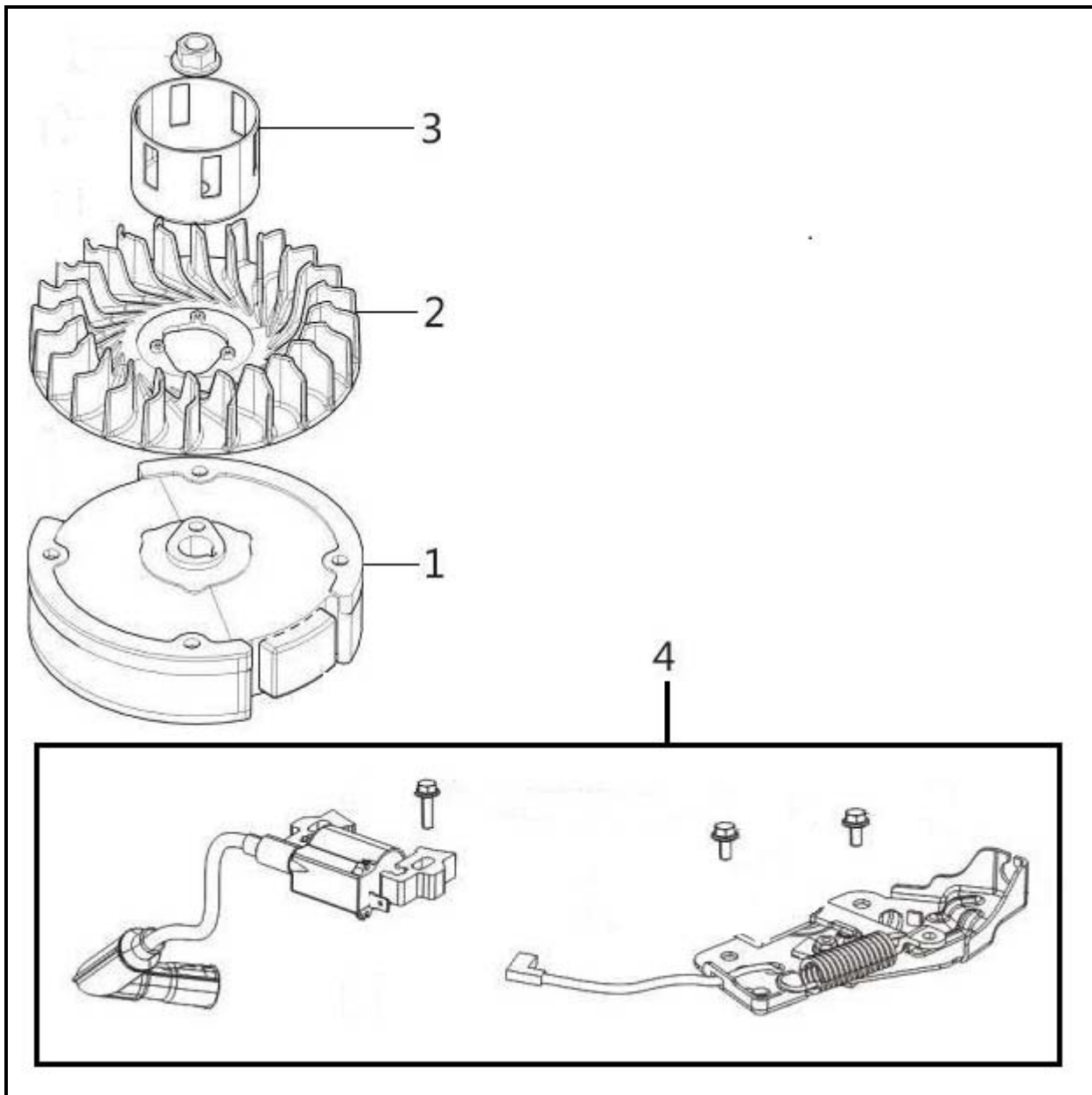
# Fuel Tank, RV150



REF. NO.	DESCRIPTION	PART NO.	QTY
1	Tank, Fuel	A203199	1
2	Cap, Fuel	A202482	1
3-6	Assembly, Fuel Line with Filter and Clamps	A203200	1

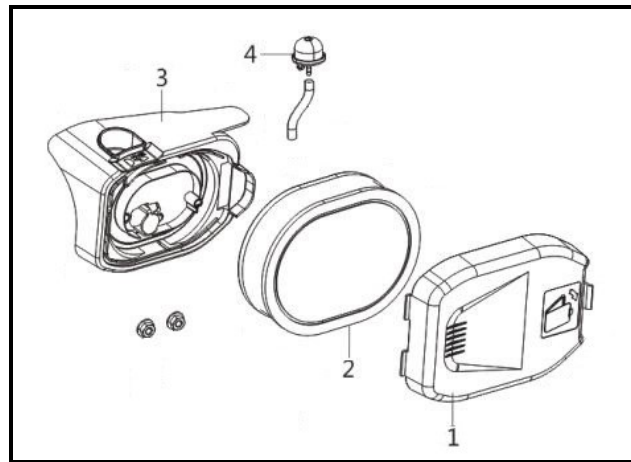


# Flywheel / Ignition, RV150



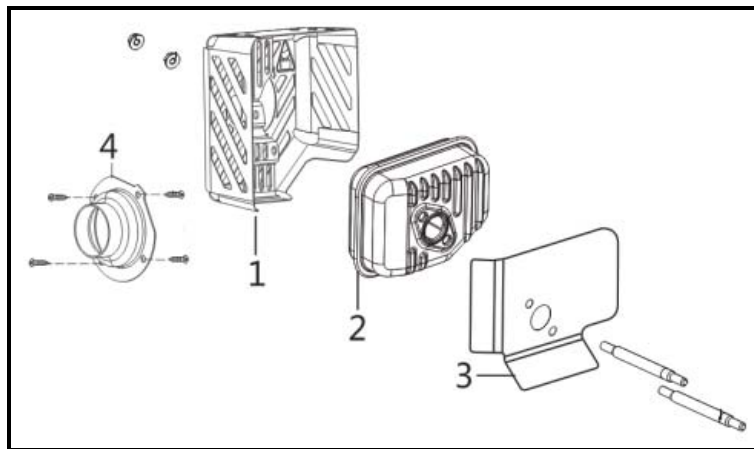
REF. NO.	DESCRIPTION	PART NO.	QTY
1	Flywheel, Cast Iron	A203281	1
2	Fan, Plastic Flywheel	A203282	1
3	Cup, Recoil Starter	A203244	1
4	Module, Ignition Coil	A203223	1

## Air Filter, RV150



REF. NO.	DESCRIPTION	PART NO.	QTY
1	Cover, Air Filter	A203219	1
2	Filter, Air	A203222	1
3	Assembly, Air Filter Housing	A203218	1
4	Assembly, Primer Bulb	A201683	1

## Muffler, RV150



REF. NO.	DESCRIPTION	PART NO.	QTY
1	Shield, Muffler	A203279	1
2	Muffler	A203197	1
3	Gasket, Muffler	A203216	1
4	Arrestor, Spark	A203278	1

# Engine Decals



REF. NO.	DESCRIPTION	PART NO.	QTY
1	Decal Sheet, Engine, SWFT15022	A203437	1

# Unit Decals



REF. NO.	DESCRIPTION	PART NO.	QTY
1	Decal Sheet, Unit, SWFT15022	A203283	1